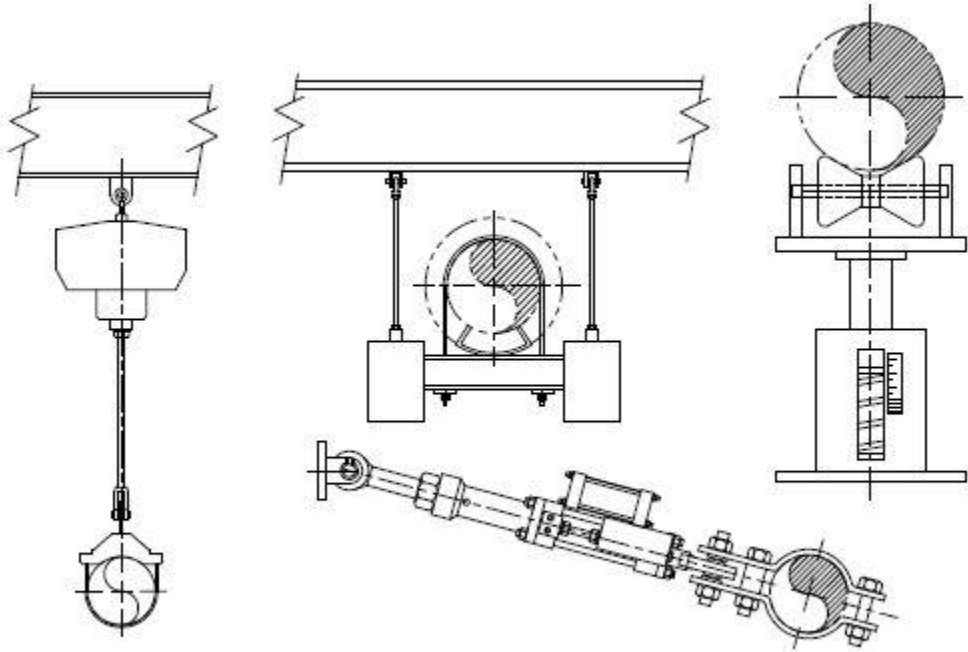


BASIC PIPE SUPPORT, PIPING AND RESTRAINT INSPECTION STEPS



OST SERVICES



June, 2016

INTRODUCTION

The primary purpose of a pipe support or hanger is to distribute the deadweight of piping systems and their related components to suitably placed structures. Where significant changes are present between shutdown and operating conditions, the expansion and contraction and the movement of the piping and components must also be considered. Pipe supports also provide a means to monitor the performance of the piping and connected equipment.

It is recognized that there is a need to maintain the performance and overall integrity of piping systems and their related components, such as restraints and guides. The implementation of a comprehensive surveillance program involves not only the

establishment of procedures for monitoring piping and pipe support performance, but also the identification of areas requiring modification, and the outlining of modification needs, and

the development of a program to monitor the performance of the pipe supports and hangers. This program should include the following: pipe support requirements, inspection and testing procedures, safety issues, and the identification of areas requiring modification. The program should be continued and updated as necessary to reflect changes in the piping system or the operating conditions of the plant.

The program should be based on the related guidelines outlined in the piping design and safety related standards. Such as ASME B31.1 and the National Board Inspection Code.